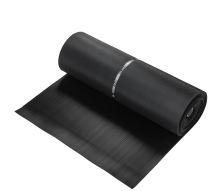
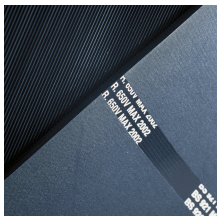
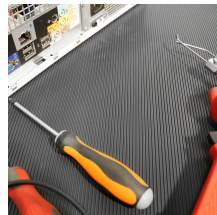


## COBASwitch

Specialist safety matting for high voltage areas



- Designed specifically for use in front of live switchboards and high voltage equipment for personal protection against electrical shocks.
- Ribbed rubber surface provides extra underfoot grip.
- Rubber has effective electrical insulating properties. (See individual volt testing.)
- 6 mm tested to 11,000 volts for 450 volt rated working.
- 9 mm tested to 15,000 volts for 650 volt rated working.
- 9 mm conforms to BS921/1976.



## Parts

Part Number	Size	Colour	Weight (kg)
SM0112059	1.2 m x 5 m (9 mm)	Black	67
SM0112056	1.2 m x 5 m (6 mm)	Black	44.1
SM0109056	0.9 m x 5 m (9 mm)	Black	55.2
SM010013	0.9 m x 5 m (6 mm)	Black	33.1
SM010040C	1.2 m x per linear metre (9 mm)	Black	13.4
SM010040	1.2 m x 10 m (9 mm)	Black	134
SM010030C	0.9 m x per linear metre (9 mm)	Black	11.04
SM010030	0.9 m x 10 m (9 mm)	Black	110.4
SM010020C	1.2 m x per linear metre (6 mm)	Black	8.82
SM010020	1.2 m x 10 m (6 mm)	Black	88.2

## Technical Specifications

<b>Material</b>	Natural rubber base polymer
<b>Surface Finish</b>	Fine fluted ribs
<b>Product Height</b>	6 mm, 9 mm
<b>Roll Length</b>	10 m
<b>Min. Operating Temperature</b>	-20°C
<b>Max. Operating Temperature</b>	+80°C
<b>Environmental Resistance</b>	Suitable for dry indoor environments
<b>Typical Applications</b>	High voltage areas, Open switchboards
<b>Installation Method</b>	Loose lay
<b>Cleaning Method</b>	Hose down or pressure wash using a mild

Part Number	Size	Colour	Weight (kg)	detergent
SM010010C	0.9 m x per linear metre (6 mm)	Black	6.88	
SM010010	0.9 m x 10 m (6 mm)	Black	62	

## Additional Information



Cobaswitch to BS921 Report 7M0598701 - March 2010

Get in touch | To order FREE samples or arrange a site visit please call +44 (0)1788 228 555 or email [sales@coba.com](mailto:sales@coba.com)

[www.coba.com](http://www.coba.com)